

# OPTIMIZING OUTCOMES THROUGH PERSONALIZED MEDICINE

Today, many patients have the option of treating their aortic valve disease with either a surgical or transcatheter approach. With new web-based tools, you can help your patients choose the option that is right for them.

In collaboration with the Society of Thoracic Surgeons (STS) and the American College of Cardiology (ACC), the Aortic Valve ADVICE team has developed a personalized risk calculator and an educational website for your patients with aortic valve disease.

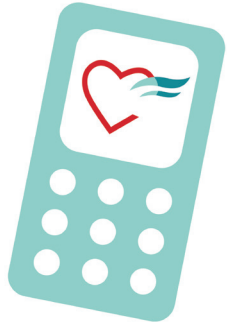
The Aortic Valve ADVICE Calculator creates a personalized estimate of several clinical outcomes in the first year after valve replacement with either surgical or transcatheter approach.



Patients can work through the Aortic Valve ADVICE calculator on their own or with their doctor.

**ADVICE** 

Navigating Aortic Valve Treatment Choices



Helping find the  
**best choice** for you.

**Watch for the Aortic Valve Advice  
Calculator App coming soon.**



# ADVICE

Navigating Aortic Valve Treatment Choices

[www.valveadvice.org](http://www.valveadvice.org)

Share this website with your patients  
to learn more about aortic valve disease.

The website and calculator have been developed by the Aortic Valve ADVICE team of patients who have experienced severe aortic valve disease, in collaboration with caregivers, clinicians, researchers, STS, and ACC. This work is funded through a Patient-Centered Outcomes Research Institute (PCORI) Award (CER-1306-04350).